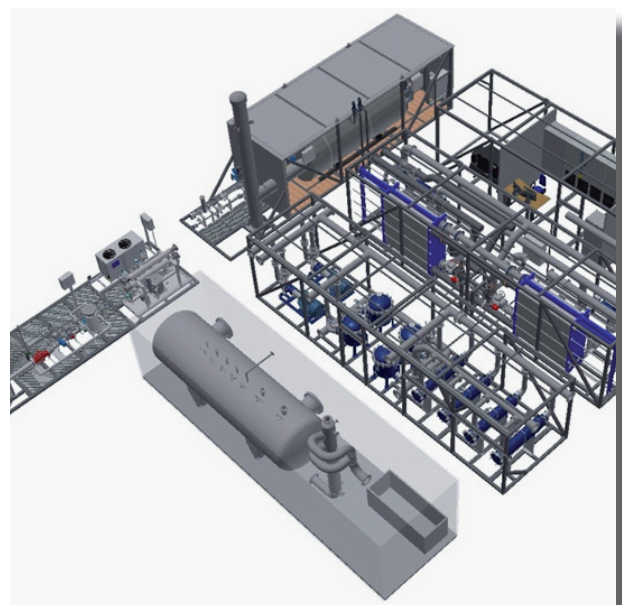
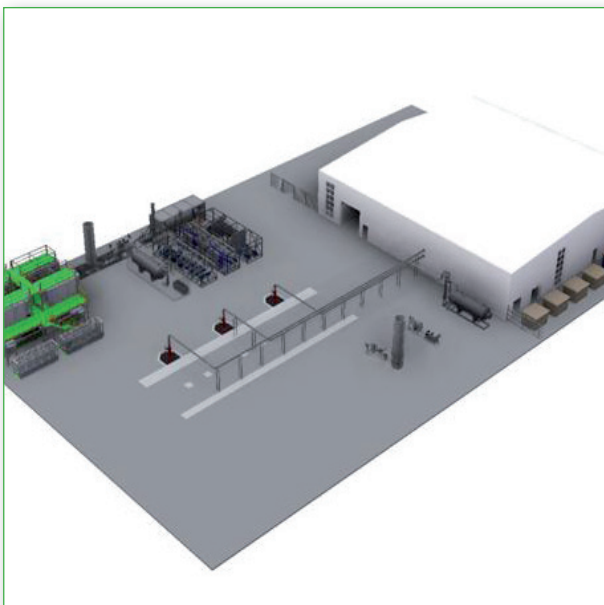
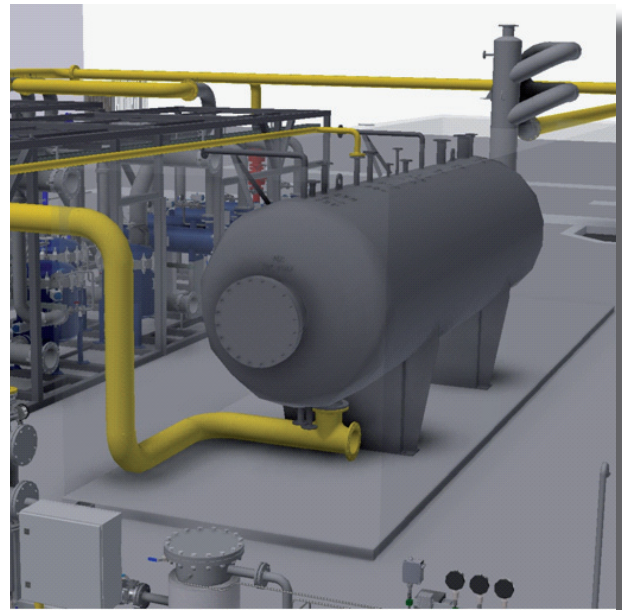


Mobile Geothermal Plant (MGTP) - module CD

Module CD -GLCC & degasser buffertank

- In this module, gas, water, oil and sand are separated from each other.
- The top of the buffer is used to separate oil and gas; the oil goes to a collection compartment.
- The volume above the water surface is used to store the gas. The geogas flows to the drying installation, boiler, CHP and flare.
- The GLCC buffer tank stores sand so that it can be further processed.
- The sand is separated from the water at the bottom of the buffer; the geowater flows to the next module.
- The complete module is automated and equipped with its own control system.



The MGTP (Mobile Geothermal Plant) is designed by GtS and built, based on many years of operational experience. It is a temporary geothermal installation consisting of six modules and can be deployed immediately after the production and injection wells have been drilled.

The MGTP can perform extensive well testing. The mobile installation can also immediately produce heat as soon as the first geothermal water is pumped to the surface. This allows the entire geothermal project to be shortened by six months and the specifications of the final installation can be determined more accurately.

Advantages of the MGTP are:

- no separate well tests required
- meteen productie van warmte, schoon water en geogas
- immediate production of heat, clean water and geogas
- no unnecessary loss of energy
- shorten geothermal project
- nauwkeuriger te bepalen specificaties definitieve installatie
- final installation specifications to be determined more precisely

The modules can also be used separately.

