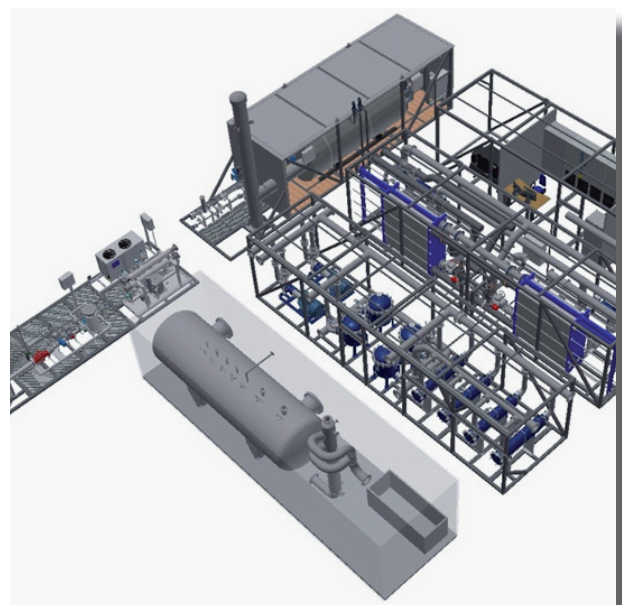
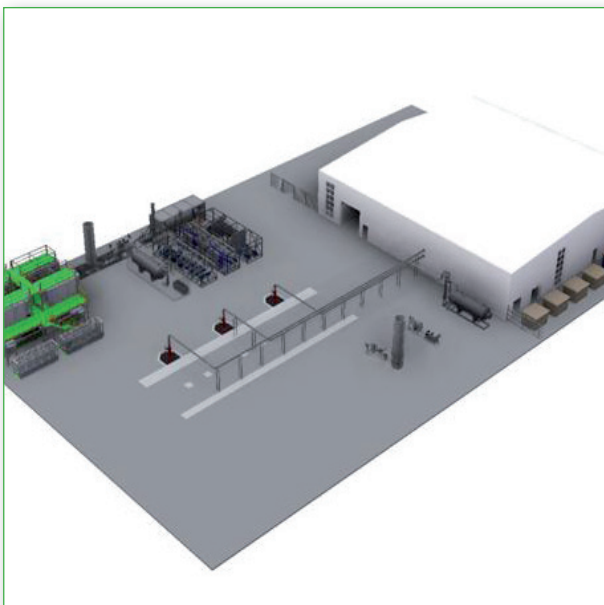
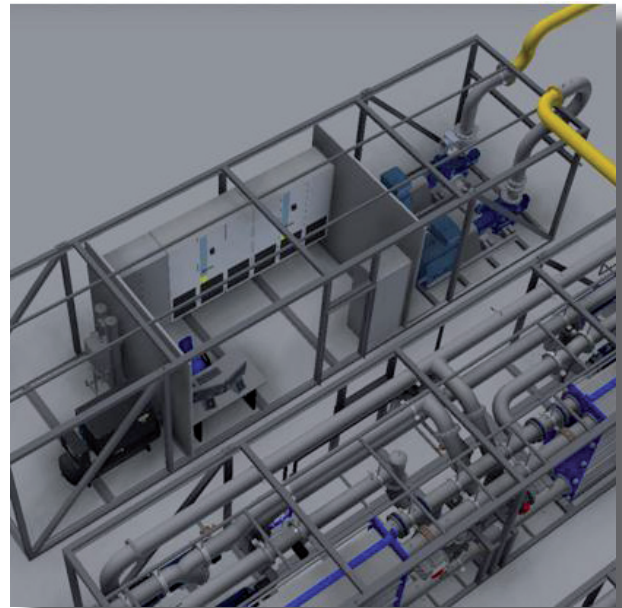


Mobile Geothermal Plant (MGTP) - module CIA

Module CIA - Control room, injection pumps, compressed air and nitrogen generator

1. **The control room** controls all modules of the MGTP and distributes the power.
2. **Injectie pump section (1x100%)**
The pressure is increased to 52 barg to pump the geowater into the injection well. The injection pipes contain automatic valves.
3. **Compressed air and nitrogen generator**
A nitrogen generator is supplied so that the geowater can be kept oxygen-free.
4. All power and signal cables run from this module. Connections are made via special plug connections.



The MGTP (Mobile Geothermal Plant) is designed by GtS and built, based on many years of operational experience. It is a temporary geothermal installation consisting of six modules and can be deployed immediately after the production and injection wells have been drilled.

The MGTP can perform extensive well testing. The mobile installation can also immediately produce heat as soon as the first geothermal water is pumped to the surface. This allows the entire geothermal project to be shortened by six months and the specifications of the final installation can be determined more accurately.

Advantages of the MGTP are:

- no separate well tests required
- meteen productie van warmte, schoon water en geogas
- immediate production of heat, clean water and geogas
- no unnecessary loss of energy
- shorten geothermal project
- nauwkeuriger te bepalen specificaties definitieve installatie
- final installation specifications to be determined more precisely

The modules can also be used separately.

