

# Mobile Geothermal Plant (MGTP) - module BF

## Module BF - Booster pumps & HT filter

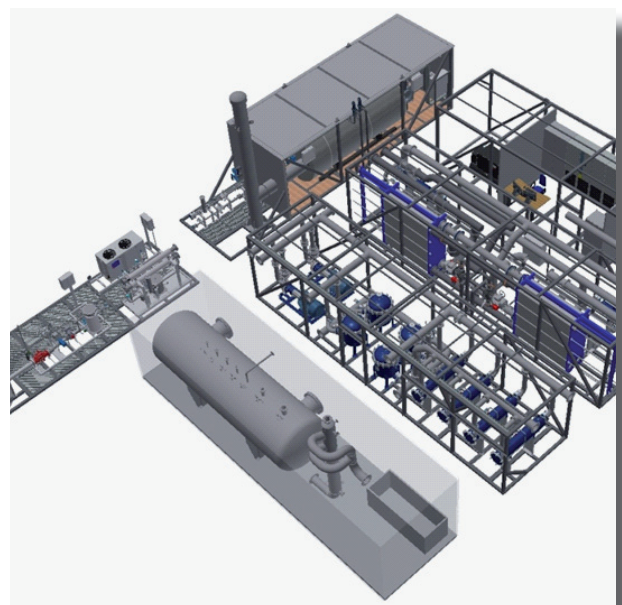
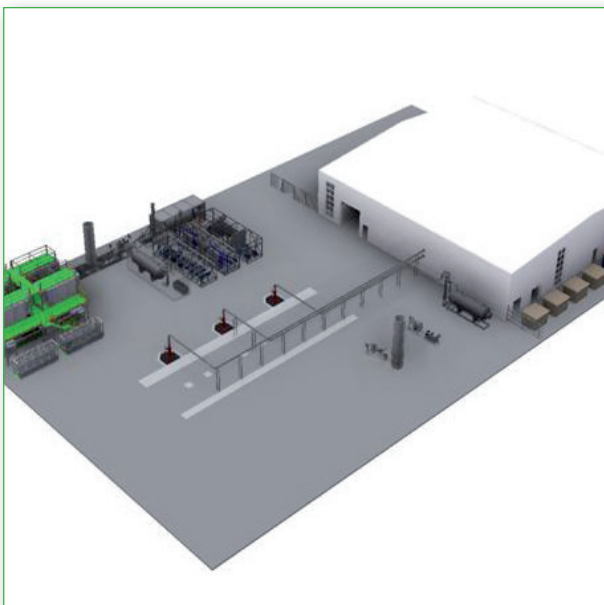
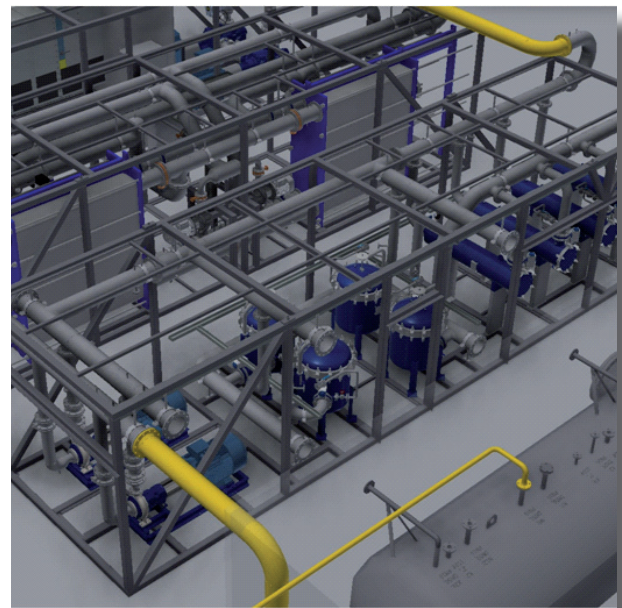
### 1. Booster pumps (2x50%)

After the geowater in the GLCC has been degassed, the pressure is increased to prevent further degassing. The booster pump section is designed for 380 m<sup>3</sup>/h geowater.

### 2. HT Filter (2x2x50%)

In the high-temperature filter section, the geowater is filtered in two steps. The first step consists of 4 filterbags.

The filterbags can be supplied in 5, 10 and 25 µm. These are automatically exchanged when they are completely soiled. Filter elements are used for the second step. These are available in 1, 5 and 10 µm. Each filter is designed for 190 Nm<sup>3</sup>/h. The section is designed for 380 m<sup>3</sup>/h.



The MGTP (Mobile Geothermal Plant) is designed by GtS and built, based on many years of operational experience. It is a temporary geothermal installation consisting of six modules and can be deployed immediately after the production and injection wells have been drilled.

The MGTP can perform extensive well testing. The mobile installation can also immediately produce heat as soon as the first geothermal water is pumped to the surface. This allows the entire geothermal project to be shortened by six months and the specifications of the final installation can be determined more accurately.

**Advantages of the MGTP are:**

- no separate well tests required
- meteen productie van warmte, schoon water en geogas
- immediate production of heat, clean water and geogas
- no unnecessary loss of energy
- shorten geothermal project
- nauwkeuriger te bepalen specificaties definitieve installatie
- final installation specifications to be determined more precisely

The modules can also be used separately.

